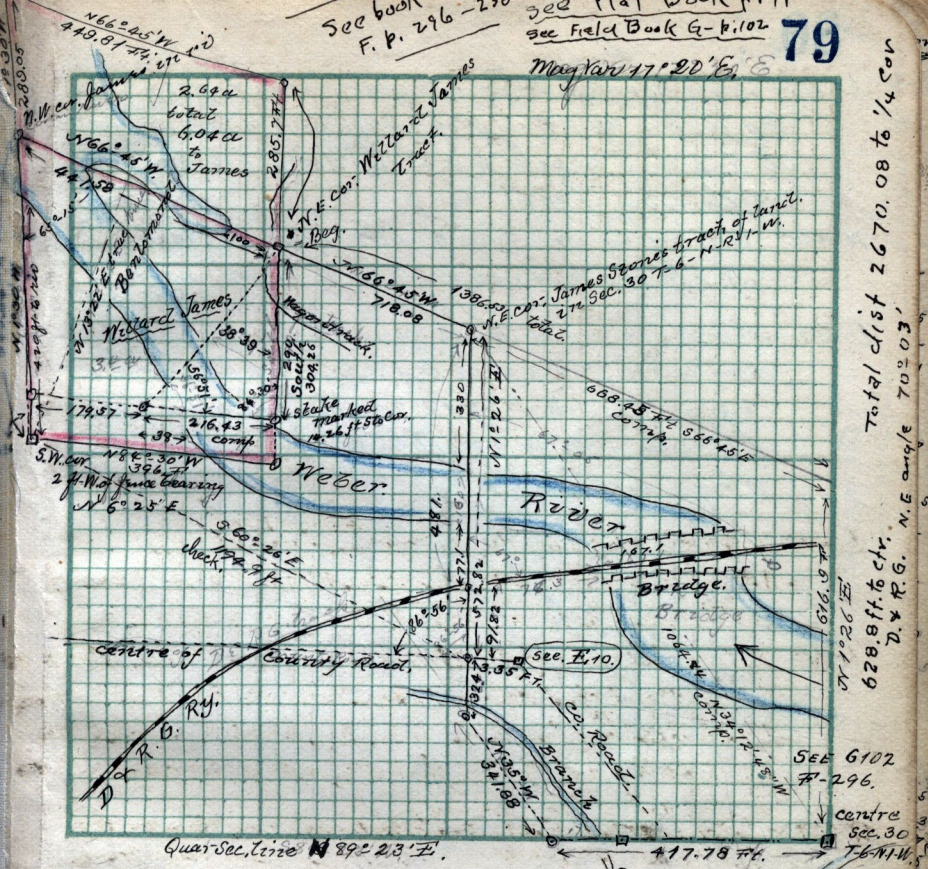


See book
F. p. 296-236

See Plat Book p. 71
See Field Book G-4:102
Mag. var. 17° 20' E

79



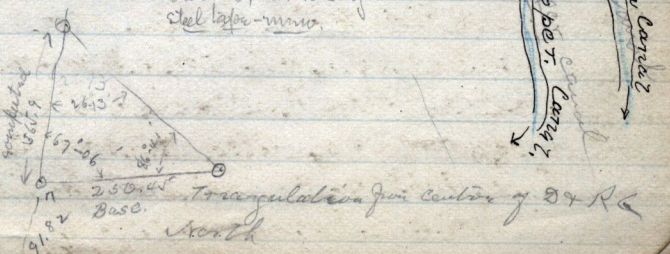
Total dist 2670.08 to 1/4 cor
628.8 ft. to ctr.
D. & R. G. N.E. ang/e 70° 03'

Scale:

April 6-1891 Survey made for Willard James in N.W. 1/4 Sec. 30 T-6-N-R-1-N.

John Baird, John Layman
Steel tape - minus

66° 13'	9.645190
66° 41'	0.354807
66° 41'	9.999272
66° 41'	0.398634
	86
67° 57'	2.752799



Triangulation for Centre of D & R G
North